

# Expertise Built Through Generations of Trust



3 Bedroom Sectional Title For Sale in Worcester Central

**R1,395,000**



## For Sale: Stunning Upmarket Three bedroom Flat

7; SS DA VINCI; 104, Hoog Street, Worcester Central; Worcester

Looking for a safe and secure upmarket flat with spectacular views and safe parking?

Seeff is proud to showcase this 3 bedroom unit on Exclusive Sole Mandate.

The Da Vinci building in Worcester is a striking example of Art Deco architecture, known for its elegant and geometric style that became popular in the early 20th century. Located in the heart of Worcester, this iconic structure was built during the Art Deco movement, which celebrated modernity, luxury, and craftsmanship with its sleek lines, bold shapes, and decorative details.

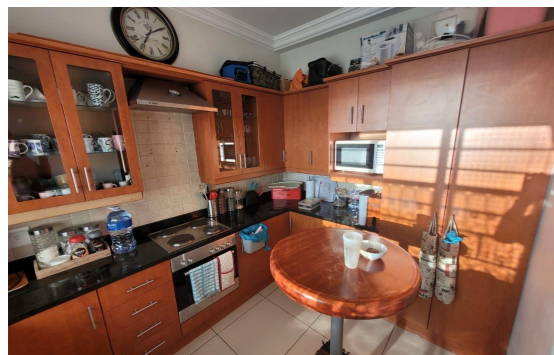
The building's façade is adorned with the classic elements of Art Deco, including symmetrical patterns, clean lines, and the use of materials such as stucco and metal accents. Its design reflects the optimism of the era, embracing both form and



**Lounges** 1

**Floor Size** 101m<sup>2</sup>

**Rates** R600



**Ursula  
Bennett**

Registered with the PPRA  
(FFC 1231478)

**082 457 9060**

**023 022 0221**

ursula.bennett@seeff.com