

Expertise Built Through Generations of Trust



1 Bedroom Garden Cottage To Let in Ifafi

R5,000 pm

NEW



Inviting one bedroom flatlet

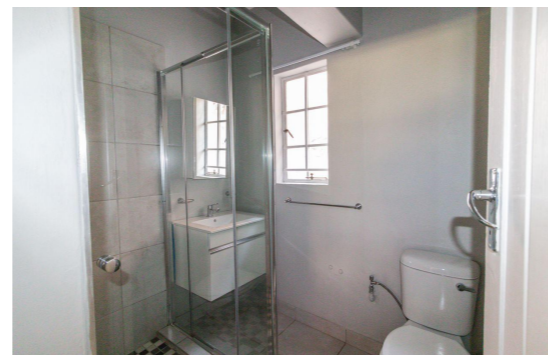
Discover this inviting one-bedroom flatlet, seamlessly connected to a beautiful main house. This charming space features an open-plan living area with modern finishes, a cozy bedroom with ample natural light, and a stylish bathroom.

Enjoy the convenience of a private entrance while benefiting from access to the home's beautifully landscaped garden, providing a perfect blend of privacy and picturesque surroundings.



Lounges 1

Land Size 1,450m²



Chantelle

Luyt

Registered with the PPRA
(FFC 20227133774)

648494972

021 200 0999

chantelle.luyt@seeff.com



SCAN THE QR CODE ON YOUR
MOBILE DEVICE TO VIEW OUR
PPRA DECLARATION

WEB REF : RLS966831

Although all details are believed to be correct, we cannot always guarantee the validity of the information found here.

Hartbeespoort & Brits : 021 200 0999