

2 Bedroom Apartment Rented in Buccleuch

R8,500 pm



## Private First Floor 2 Bed 1 Bath Apartment in Buccleuch

8; Strawberry Lan; 7, Gibson DRIVE WEST, Buccleuch; Sandton

Available immediately. Great value for money. Unfurnished at R8 500pm.

No one above you!

With dedicated carport X 1 and open guest parking.

Buccleuch – just 24 units in this complex with this unit being 90m<sup>2</sup> under roof.

Tiled floors throughout.

Lounge, dining/study nook and kitchen for open plan enjoyment. The kitchen has a hob, electric undercounter oven, eat in area plus space for 2 appliances and a fridge in the scullery.

The bedrooms are spacious with built-in cupboards. There is also an elegant bathroom which is a full bathroom offering separate shower and bath.

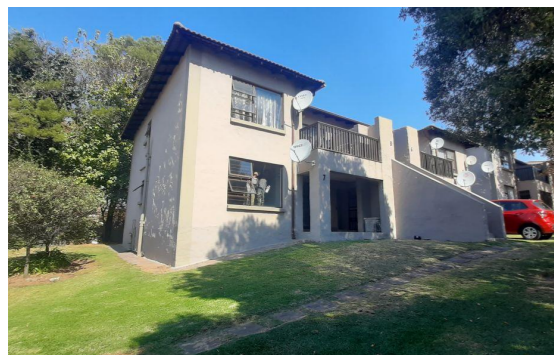
The complex is well-kept with guards, 24 hour guardhouse, swimming pool and lapa. Buccleuch is approximately 15 minutes away from Sandton CBD and a hop and a skip to Woodmead and surrounding suburbs.



**Lounges** 1

**Pool** Yes

**Floor Size** 90m<sup>2</sup>



**Tanya Reddy**

064 796 6899

011 784 1222

tanya.reddy@seeff.com