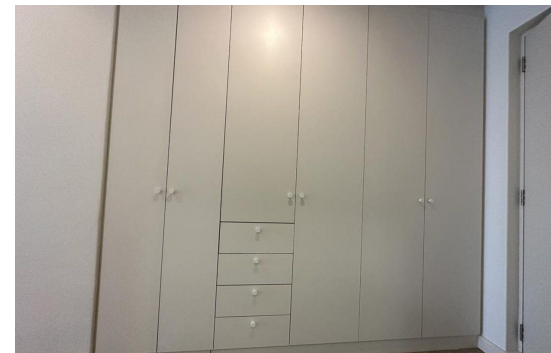
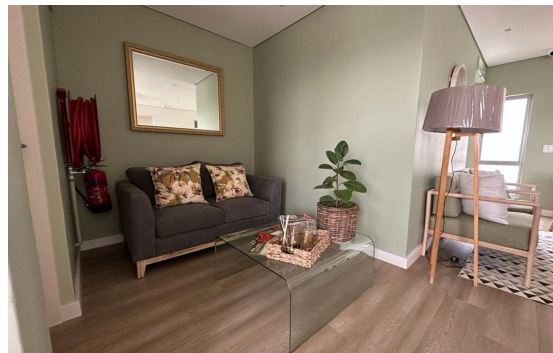


1 Bedroom Apartment For Sale in Garlington Estate

R1,100,000



Contemporary one bedroom units in beautiful Garlington Estate

An opportunity to enjoy luxury living in Hilton's beautiful Garlington Estate as 5x one-bedroom units released to market.

Nestled within this exclusive community, these modern residences are brand new and ready for immediate occupation.

Perfect for individuals seeking a stylish starter apartment, a weekend retreat, or perhaps business people travelling to the midlands and needing a compact, comfortable home for a few nights a week, these units are designed for convenience and the ultimate in a lock-up-and-go lifestyle.

Monthly expenses for insurance, municipality line charges, exterior maintenance levies are taken care of by an efficient Body Corporate (R851/month) whilst the



Lounges 1

Floor Size 42m²

Rates R2,901.84

Land Size m²

Levies R1,631.84



Joan

Ridl

072 022 4484

084 346 8084

joan.ridl@seeff.com