

1.5 Bedroom Flat For Sale in Illovo Beach

R599,000

NO TRANSFER DUTY



NEAT GROUND FLOOR FLAT - SMALL INDOOR PET ALLOWED - WHEELCHAIR FRIENDLY

02; SS ALIBAMA; 5, Park Road, Illovo Beach; Kingsburgh

NEAT GROUND FLOOR FLAT - SMALL INDOOR PET ALLOWED - WHEELCHAIR FRIENDLY

This flat on the ground floor is ideal for retirees, first-time buyers, or investors who want to rent it out on Air B'nB.

It has one large bedroom with plenty of built-in wardrobes, one modern bathroom with a shower and a washing machine connection, and a separate toilet. It also has a small space that can be used as an office or a sleeping area for a child. The kitchen is open plan and connects to the dining/lounge area, which has a door to the shared garden and braai area.

The flat comes with one secure undercover parking spot - CCTV - A 5 min walk to the

 1.5  1.5  1

Lounges 1

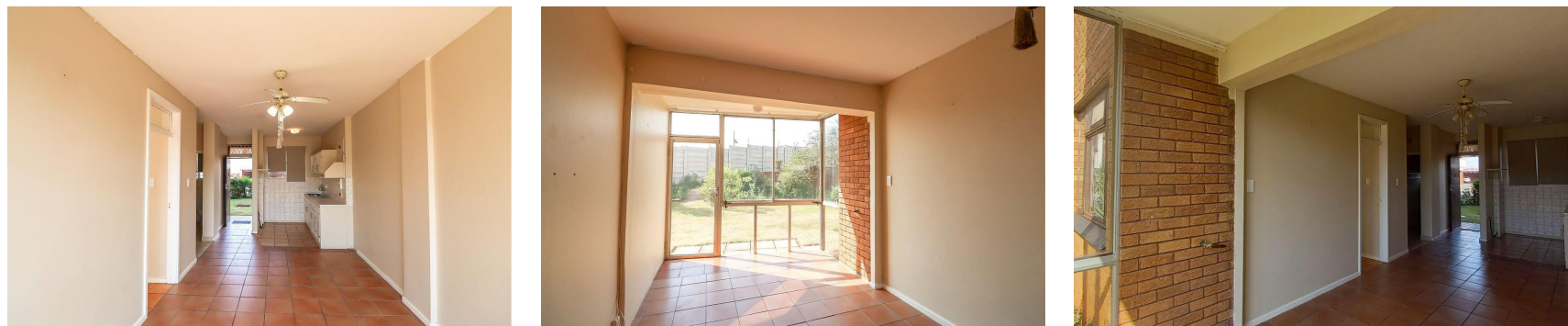
Floor Size 50m²

Rates R400

Pets Yes

Land Size 3,326m²

Levies R924



Karin

MacRae

072 103 8885

031 903 1234

karin.macrae@seeff.com