



DEVELOPMENTS

THE QUARRY ESTATE

FLOOR PLANS



THE QUARRY
ESTATE

HEAD OFFICE 021 433 2580

www.dgproperties.co.za



DEVELOPMENTS

COMPANY PARTICULARS

Established in 2002, DG Properties has proven to be a true real estate success story. The DG name has become synonymous with the proficient and effective marketing and selling of premium grade properties in Cape Town and particularly the sought-after Atlantic Seaboard. DG currently have offices in high profile positions in Sea Point and Southern Suburbs.

DG Properties prides itself on its unique and focused approach to marketing and sales, providing a comprehensive and tailored solution to ensure that sales occur at the optimum price within a compressed space of time. The company utilizes an evolved and distinctive sales force of highly adept and skilled sales agents who are selected for their extensive experience, professionalism and successful track records.

Headed by Managing Director Alexa Horne, DG Properties has a dedicated in-house marketing department ensuring that focused and specialized marketing strategies are implemented. The powerful proprietary DG database combined with its eye-catching and prominent advertising, both in print and digital media, together with our visible network of sales offices support our strong performance on the Western Cape's Atlantic Seaboard, Southern Suburbs, Western Seaboard and surrounding areas.

DOGON GROUP (PTY) LTD
REGISTRATION NO: 2002/020365/07
REGISTERED WITH THE PPRA - FFC No. F110941
ALEXA HORNE (MANAGING DIRECTOR)

P O BOX 605 SEA POINT 8060
THE KINGS, 101 REGENT ROAD
SEA POINT, SOUTH AFRICA
TEL +27 21 433 2580
FAX +27 21 433 2781

SALES AGENTS



PAUL UPTON
071 610 8088
paul@dgproperties.co.za

Registered with the PPRA - Full Status Agent - FFC No. 0525859



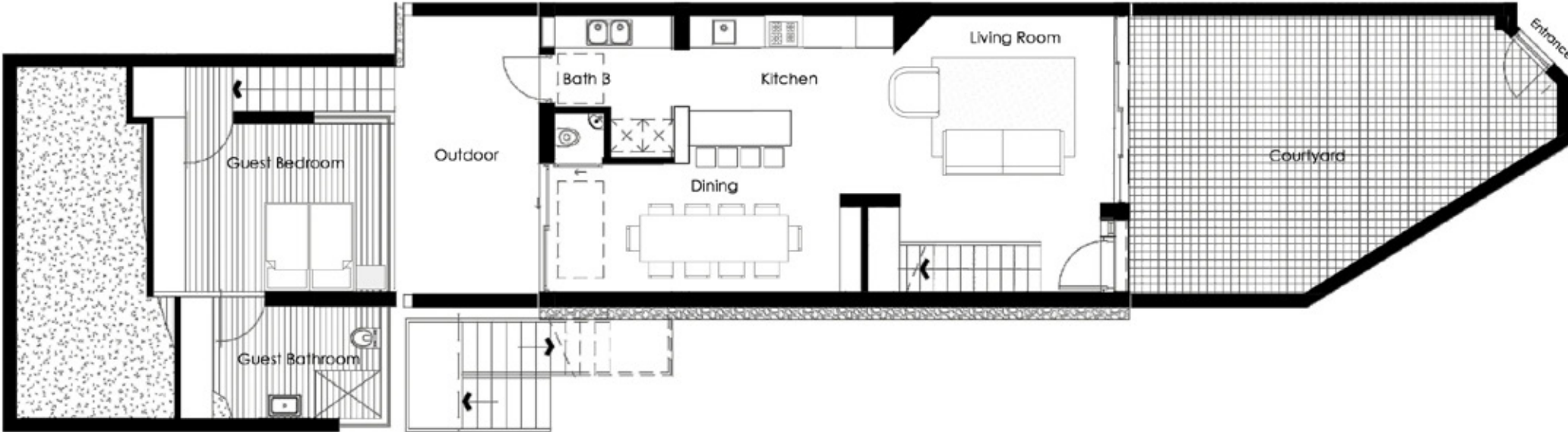
KEITH ANDERSON
083 540 5033
keith@dgproperties.co.za

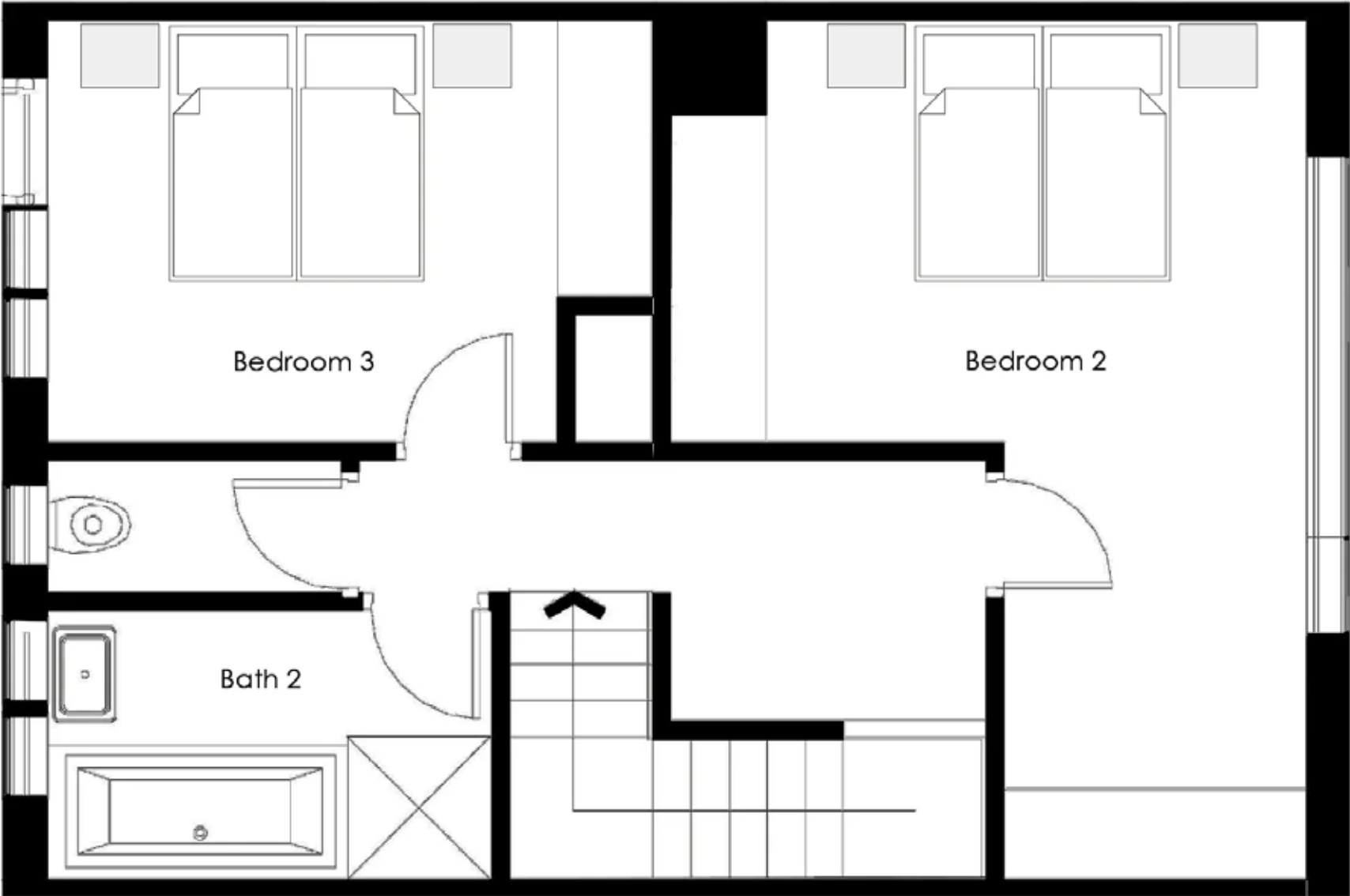
Registered with the PPRA - Full Status Agent - FFC No. 0371868

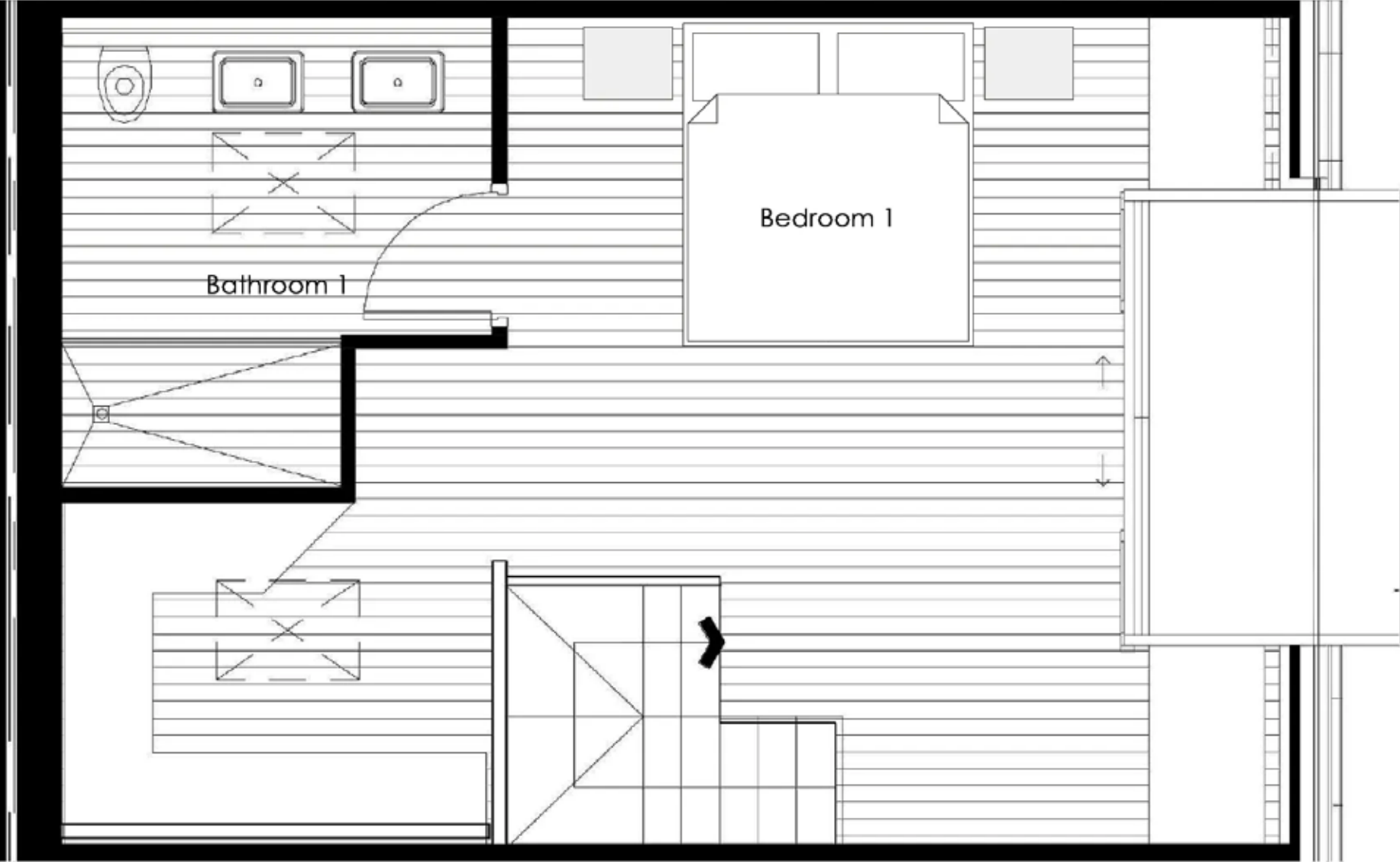
HEAD OFFICE **021 433 2580**

www.dgproperties.co.za

UNIT 1 - GROUND FLOOR

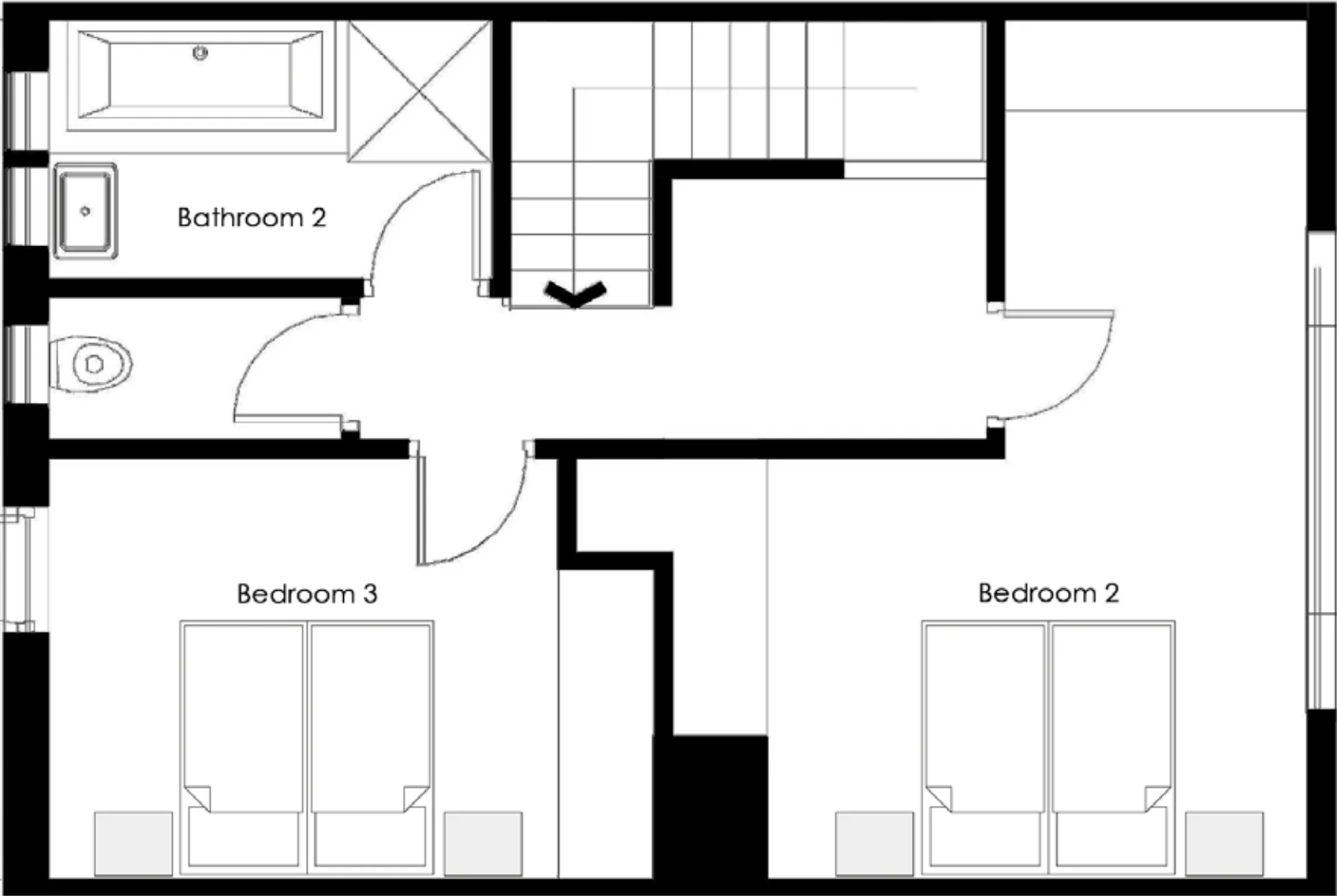






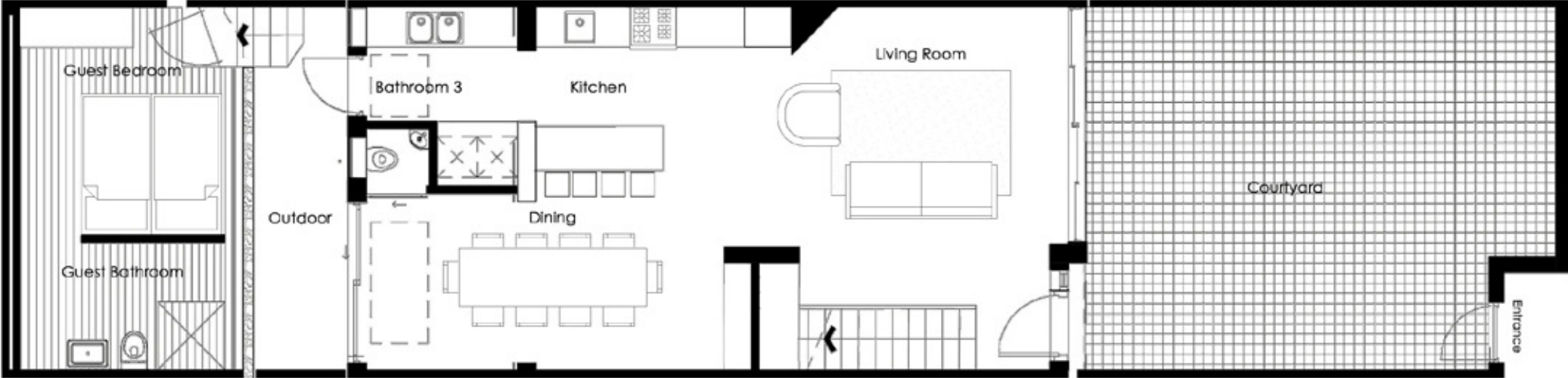
UNIT 2 - GROUND FLOOR

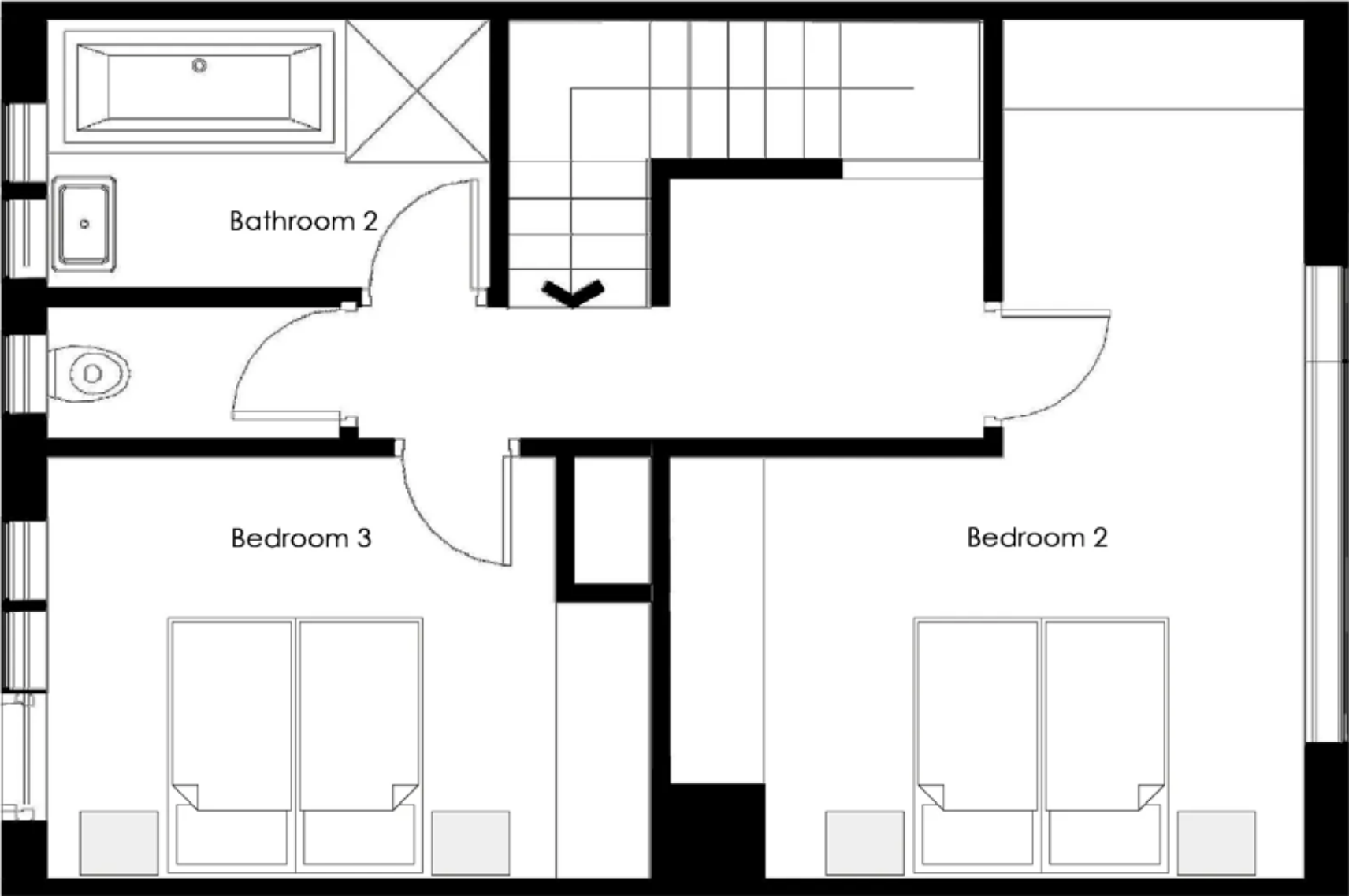


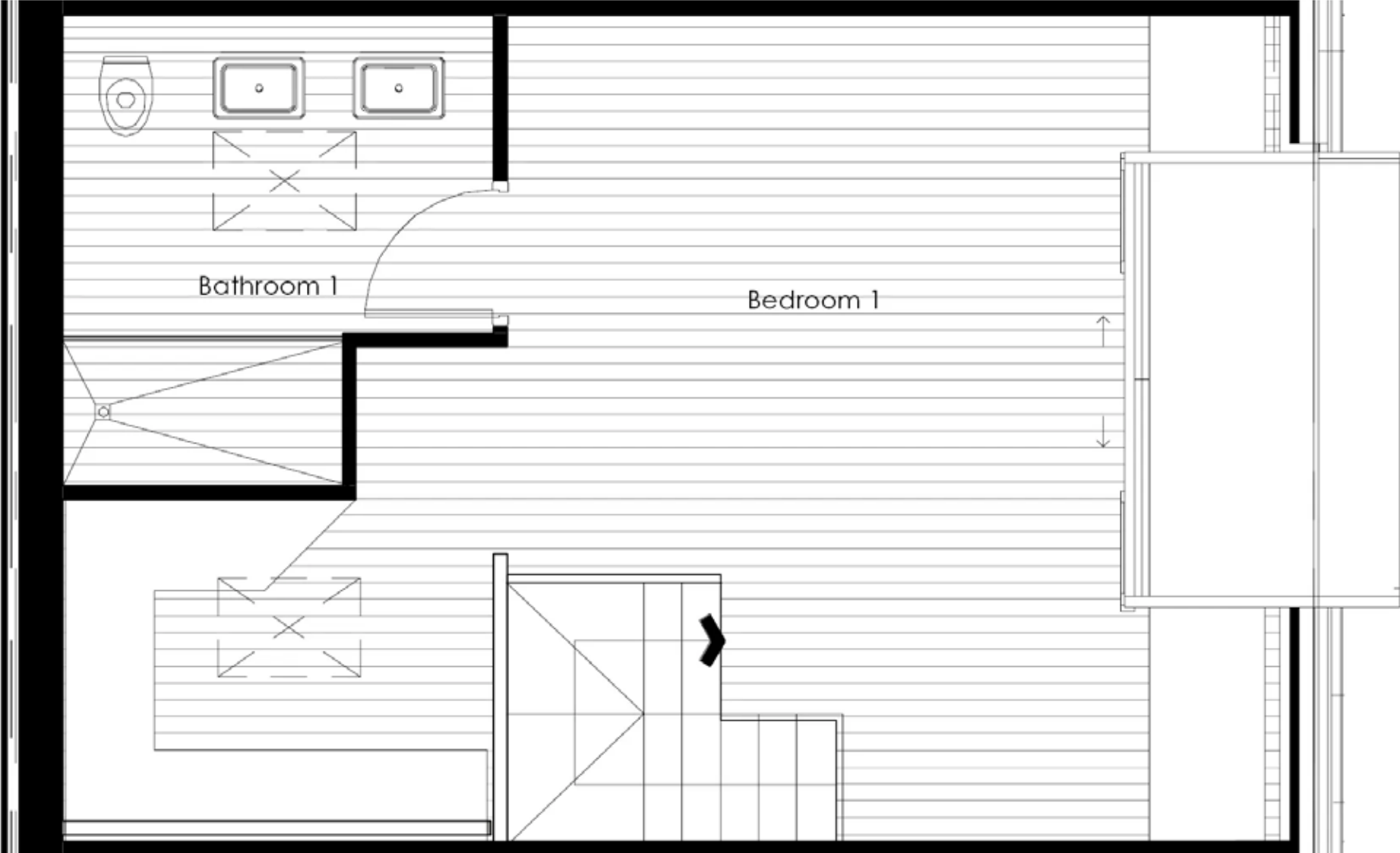


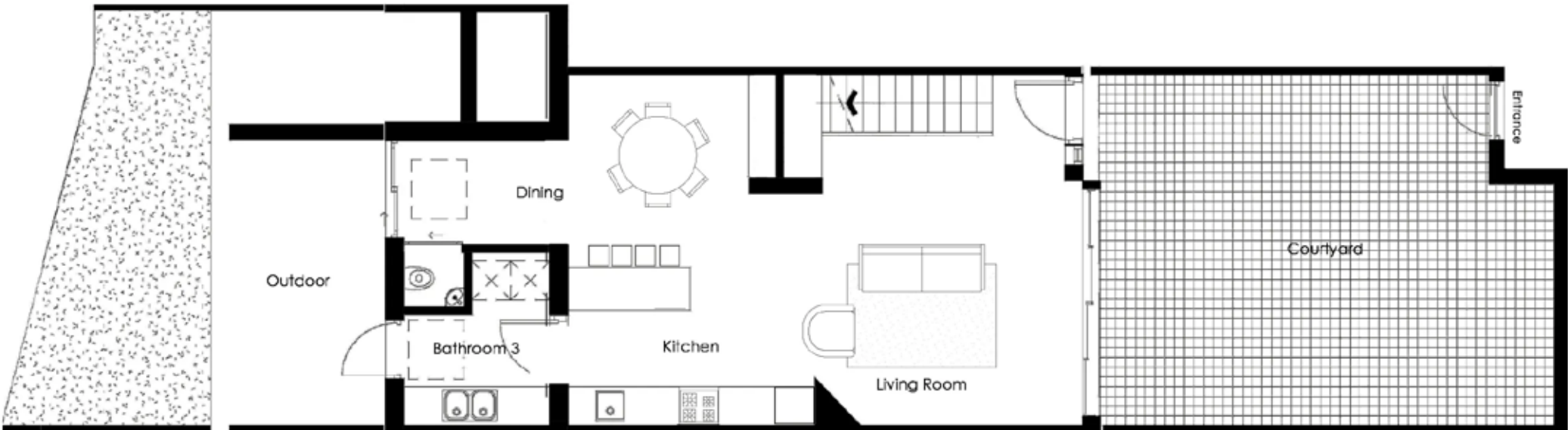


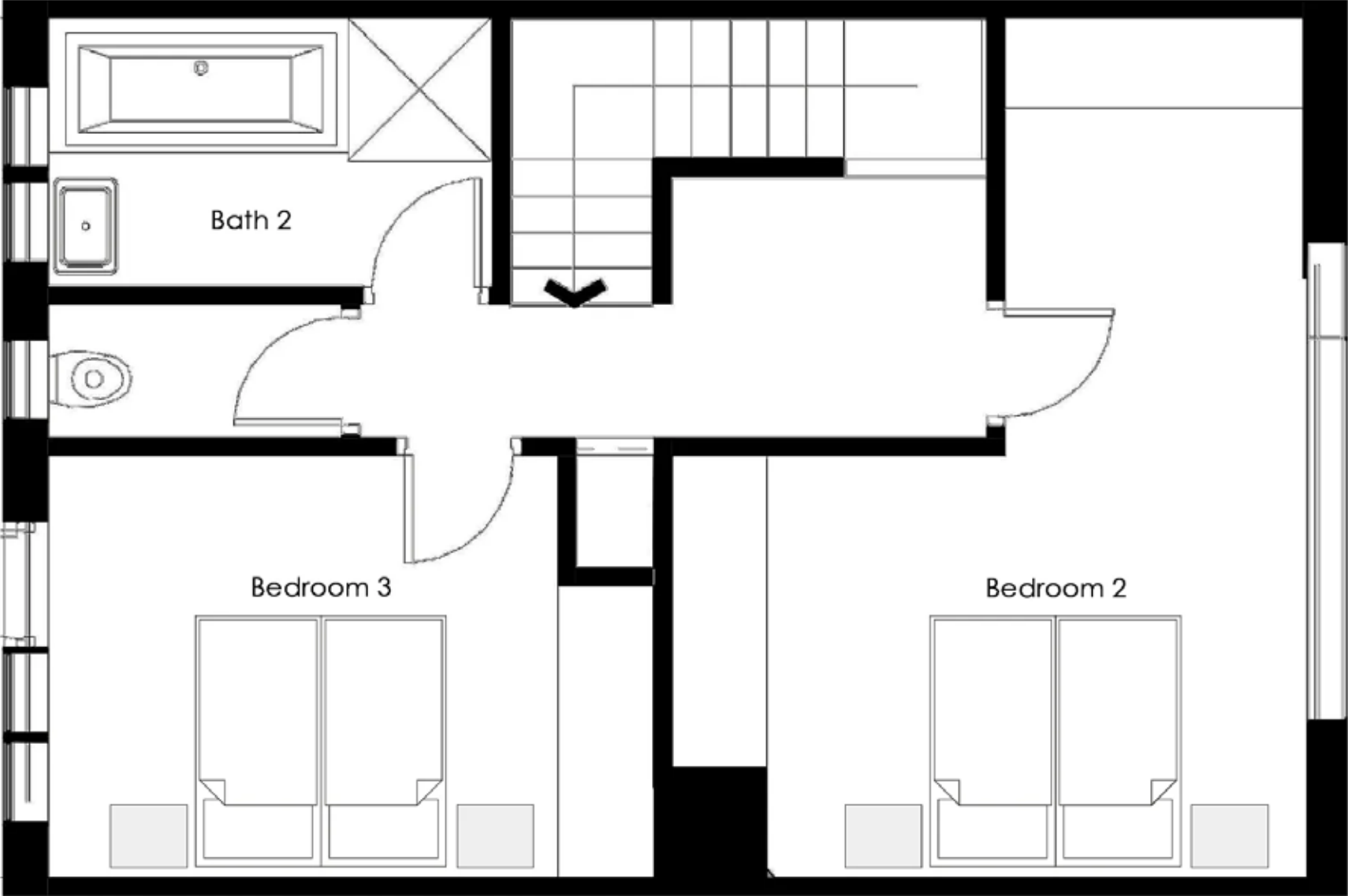
UNIT 3 - GROUND FLOOR

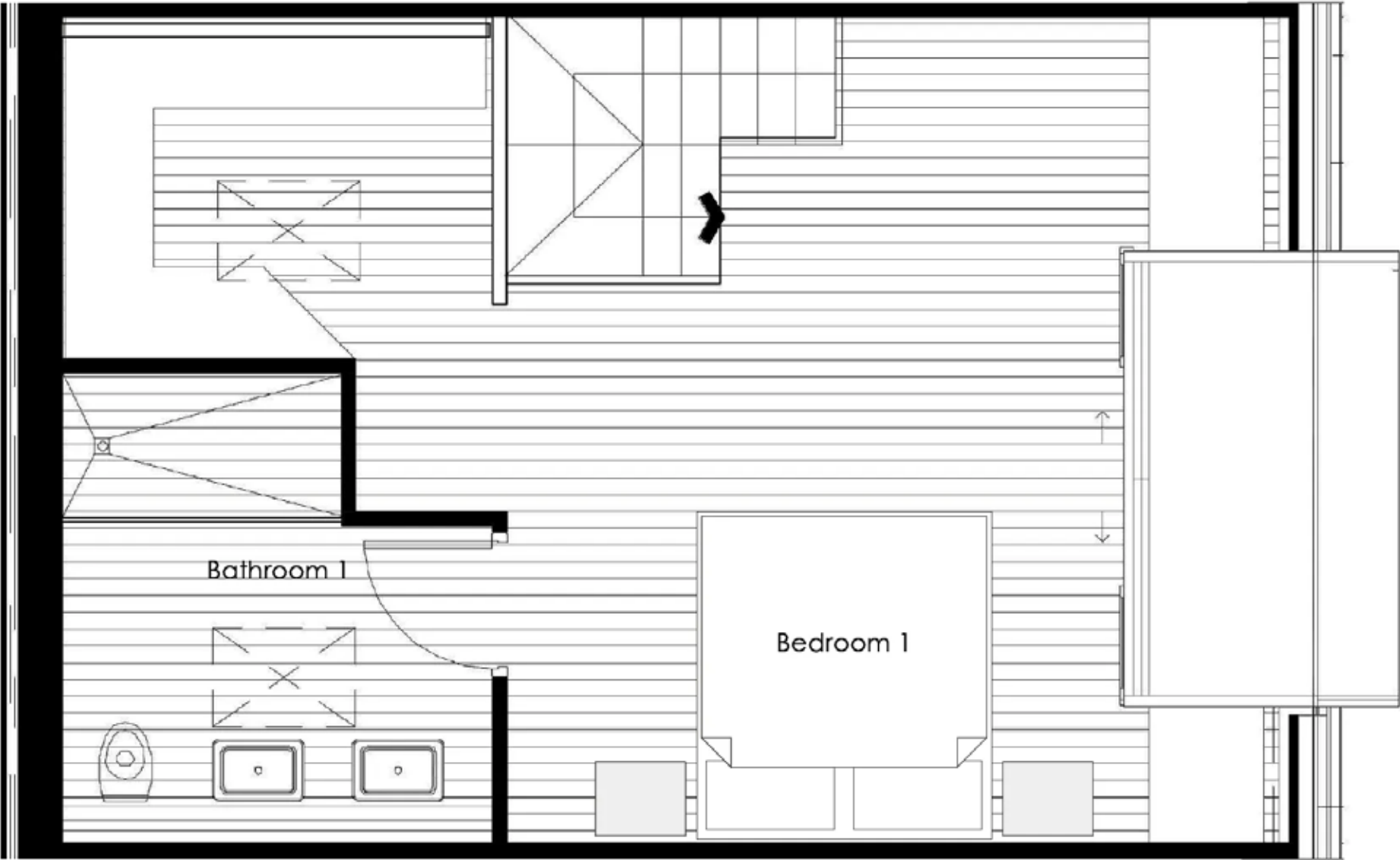




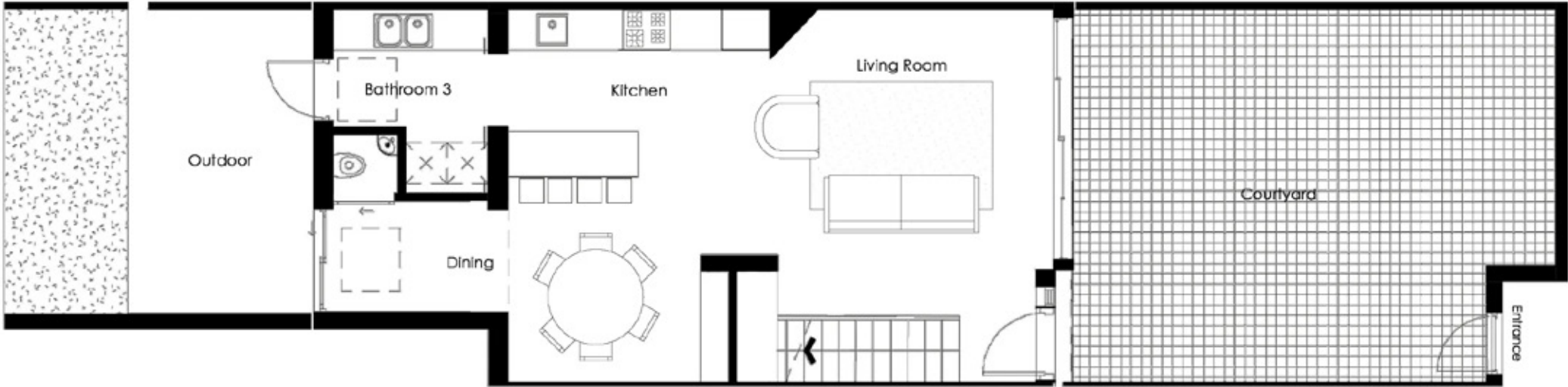


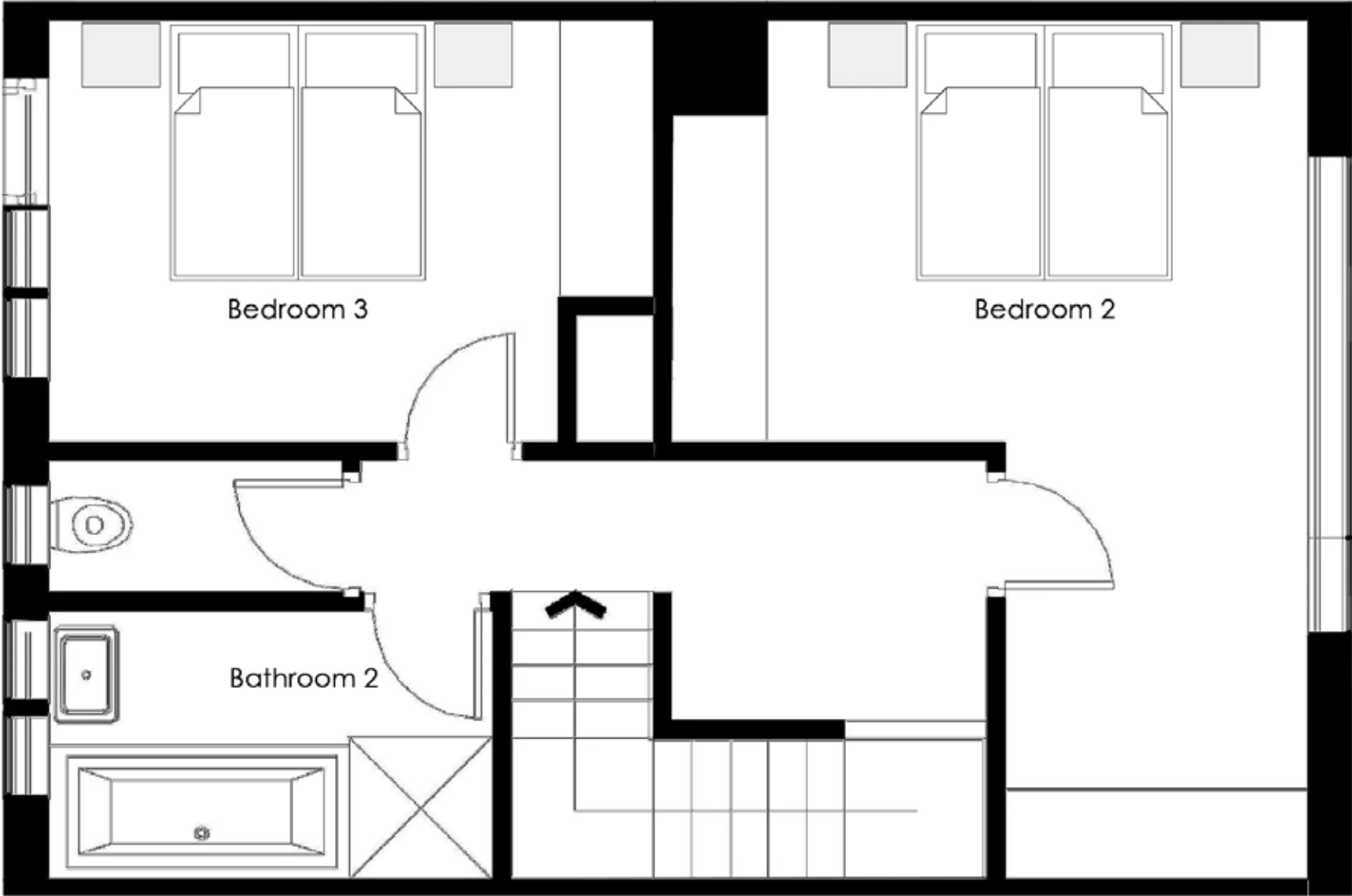


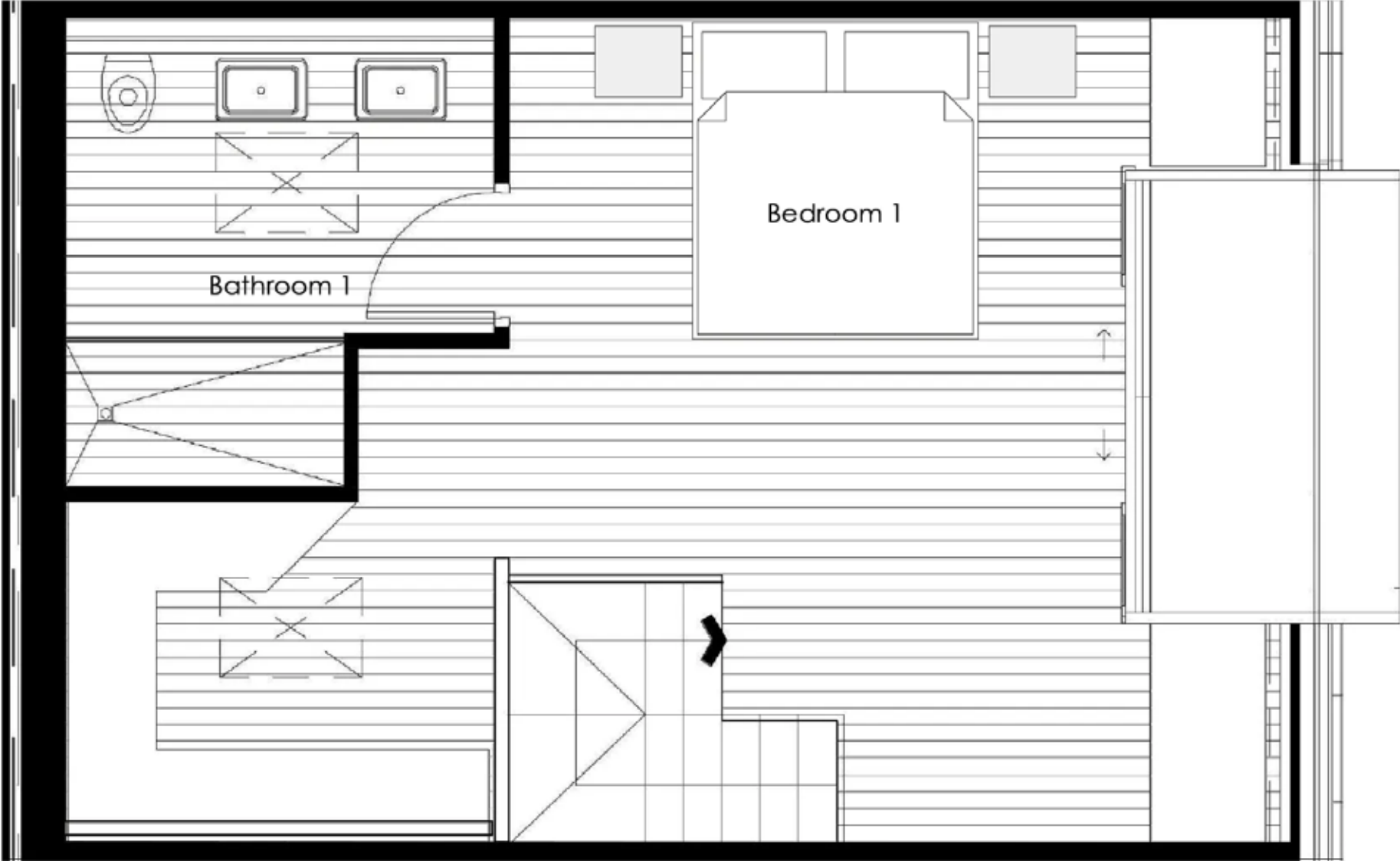




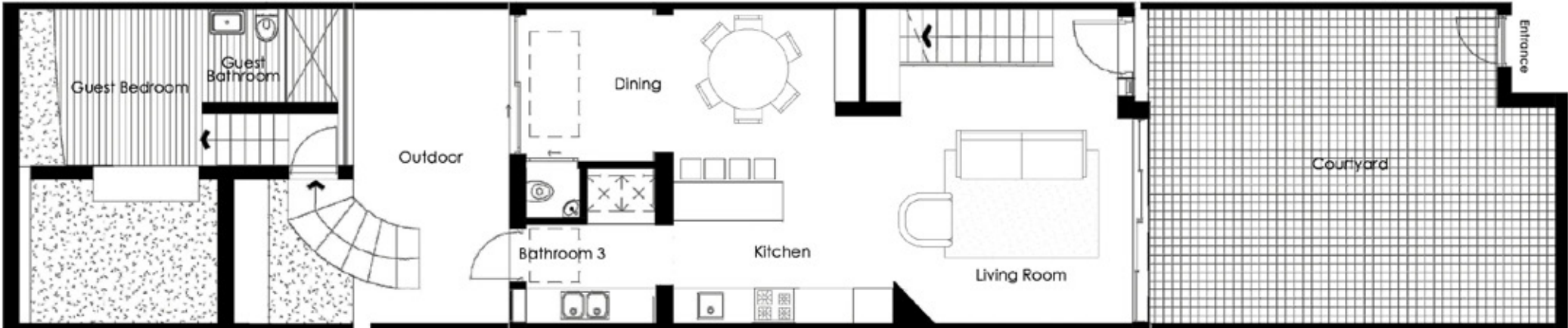
UNIT 5 - GROUND FLOOR

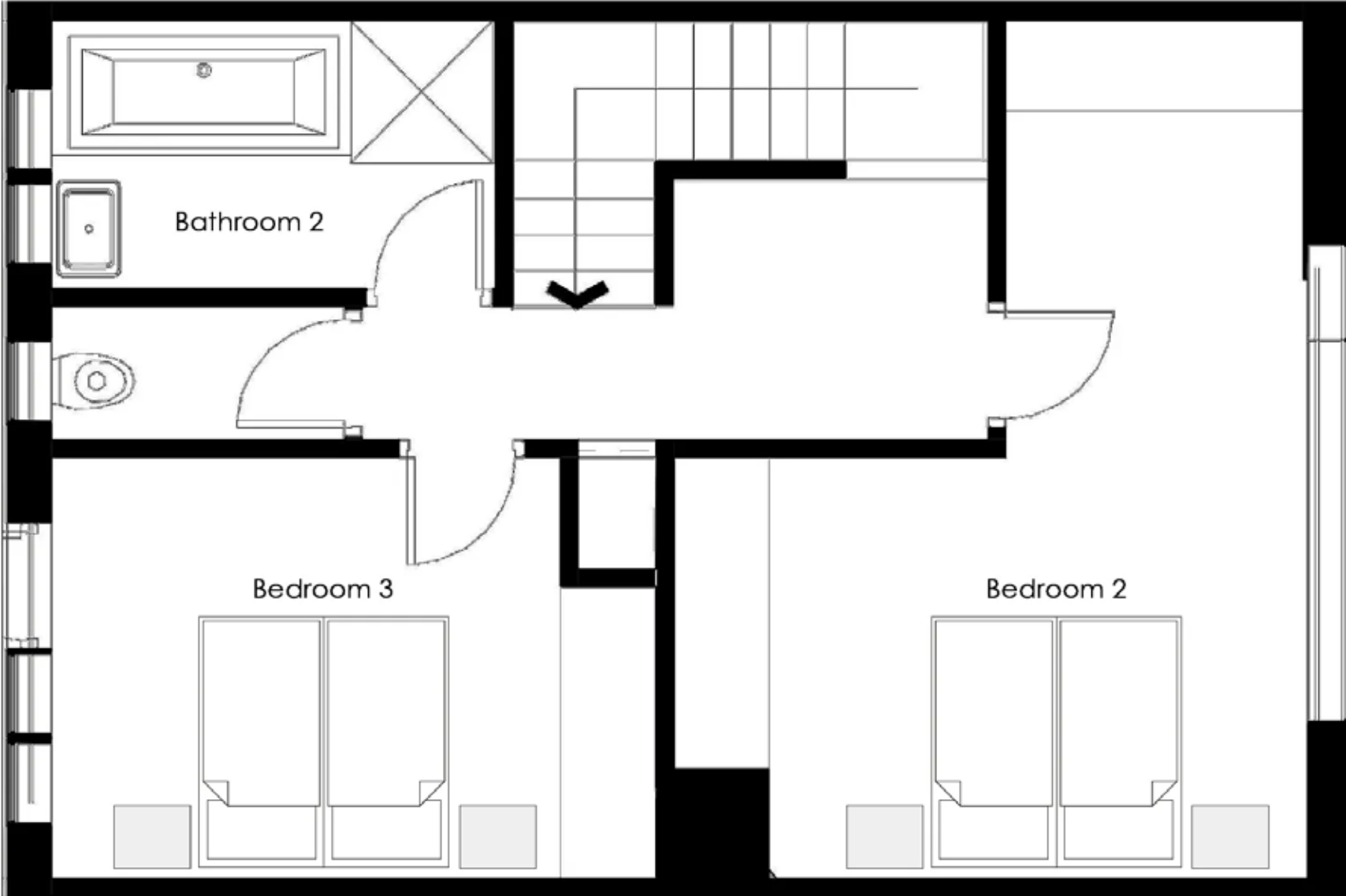


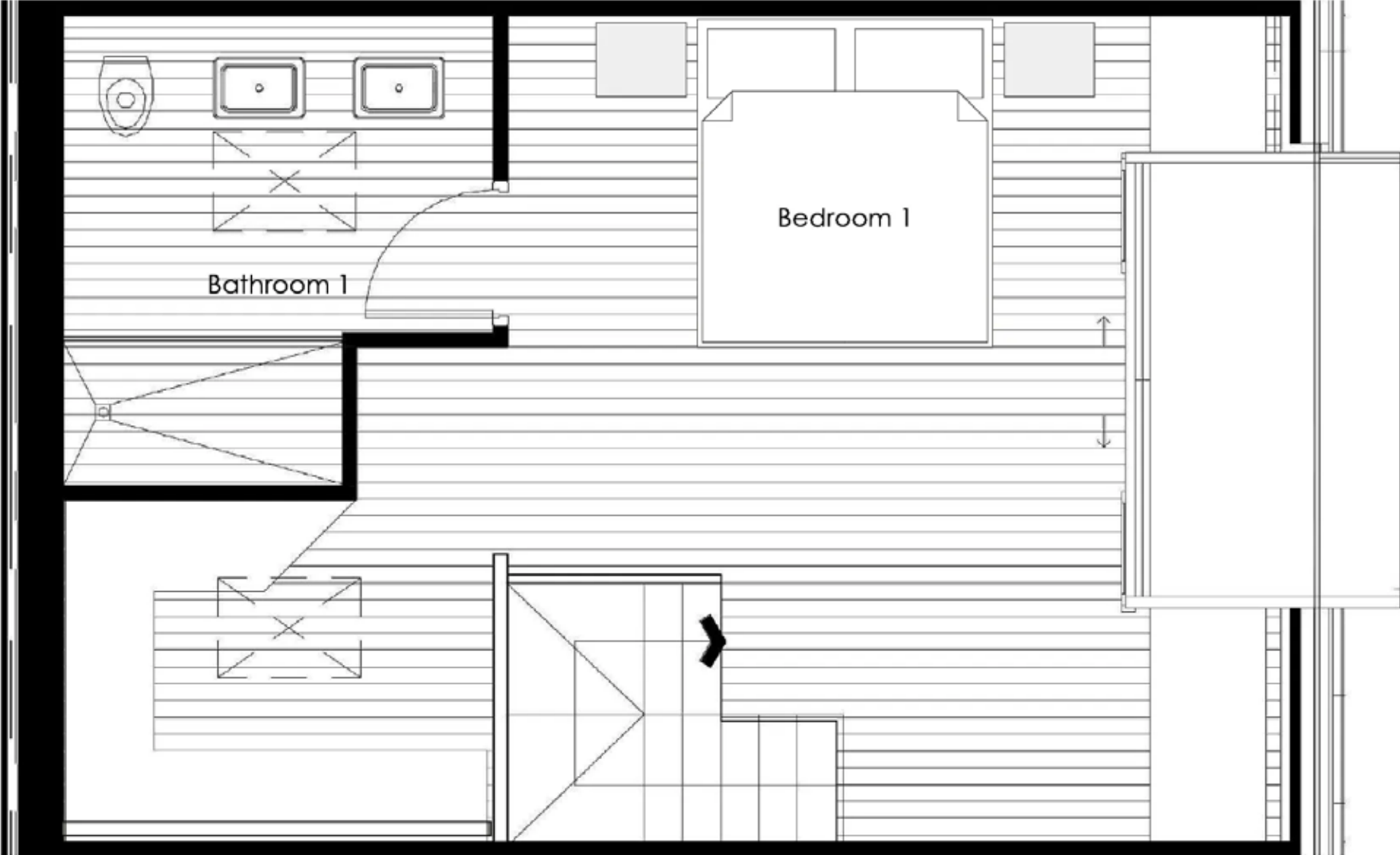




UNIT 6 - GROUND FLOOR

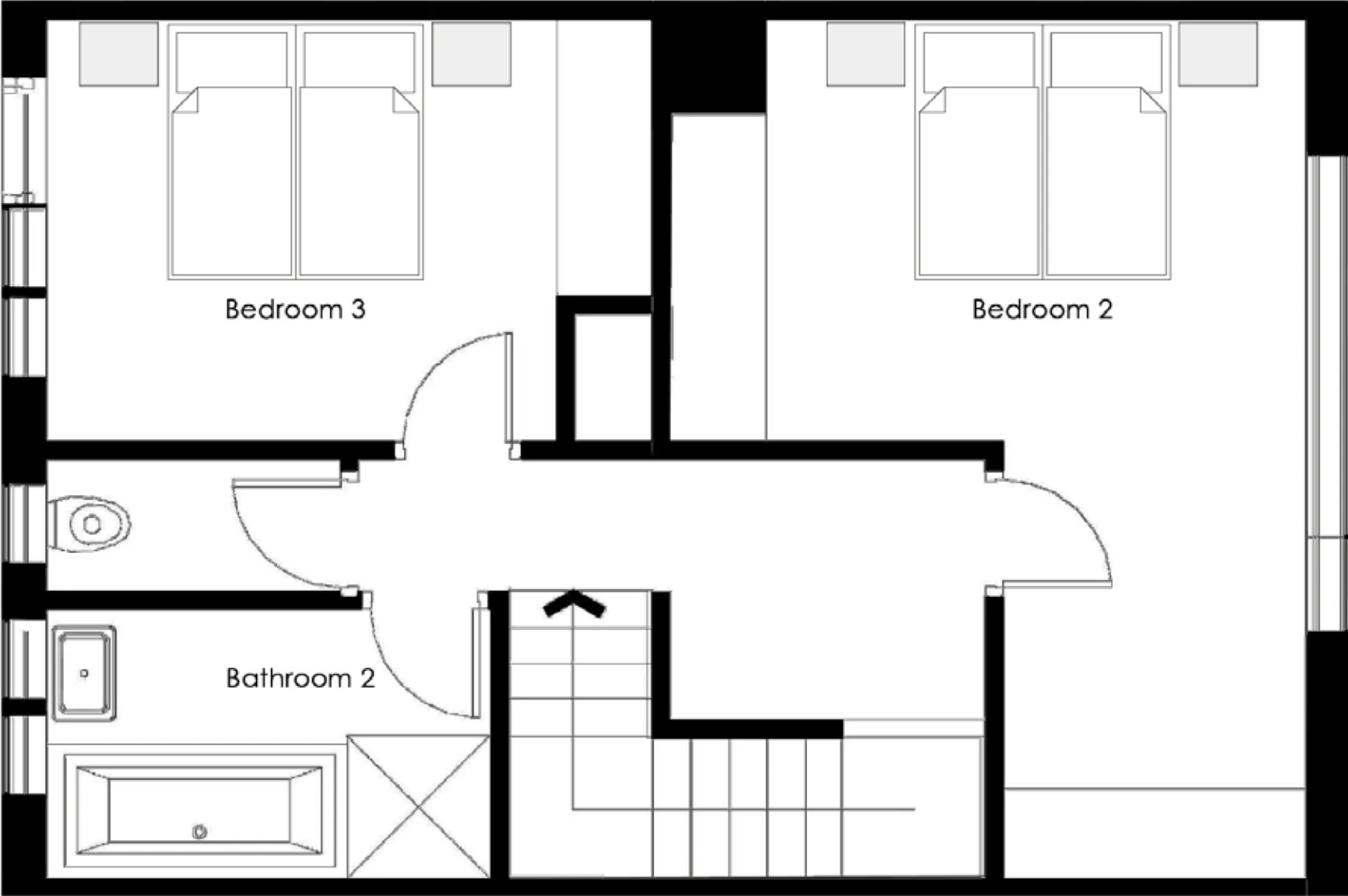


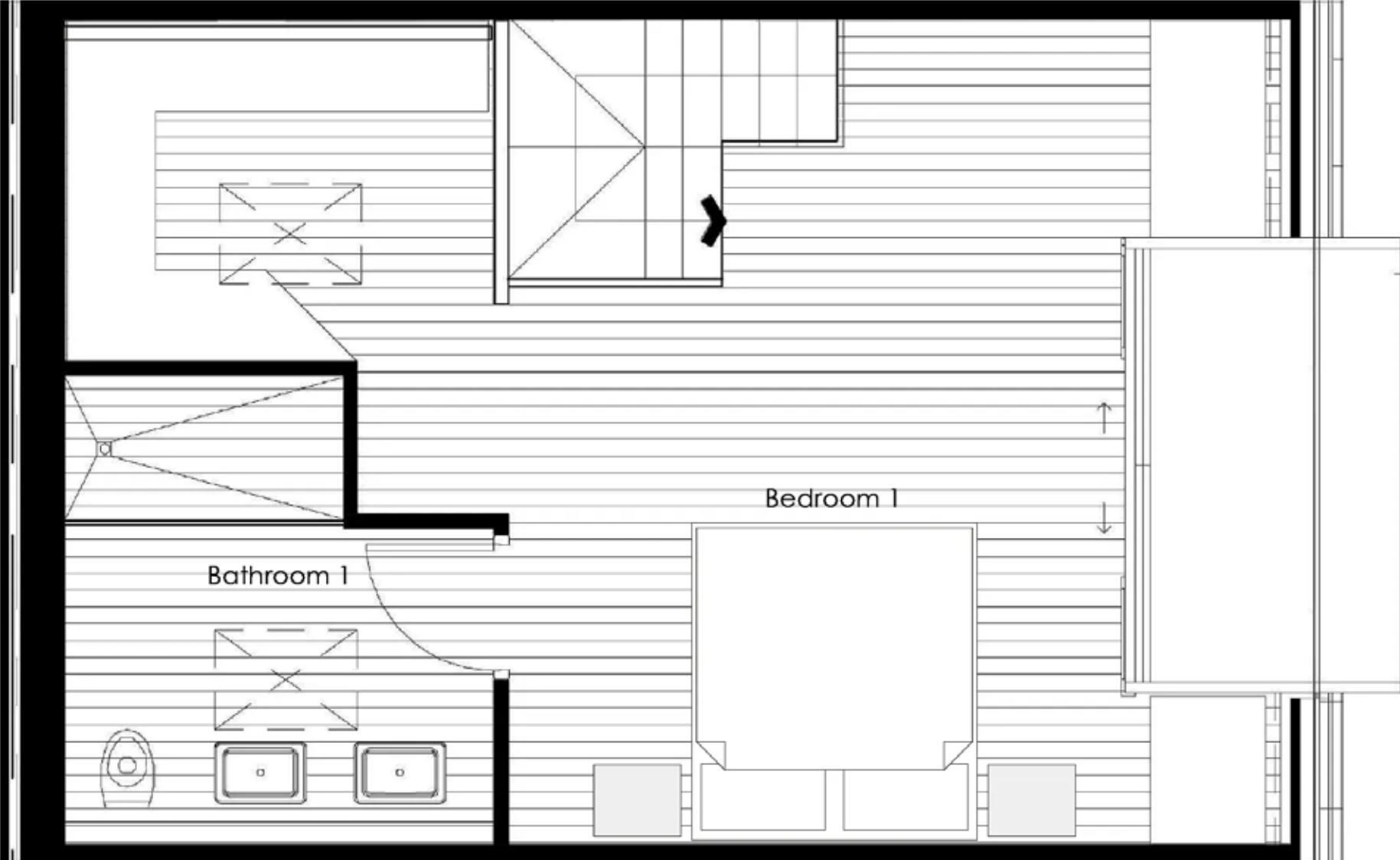




UNIT 7 - GROUND FLOOR



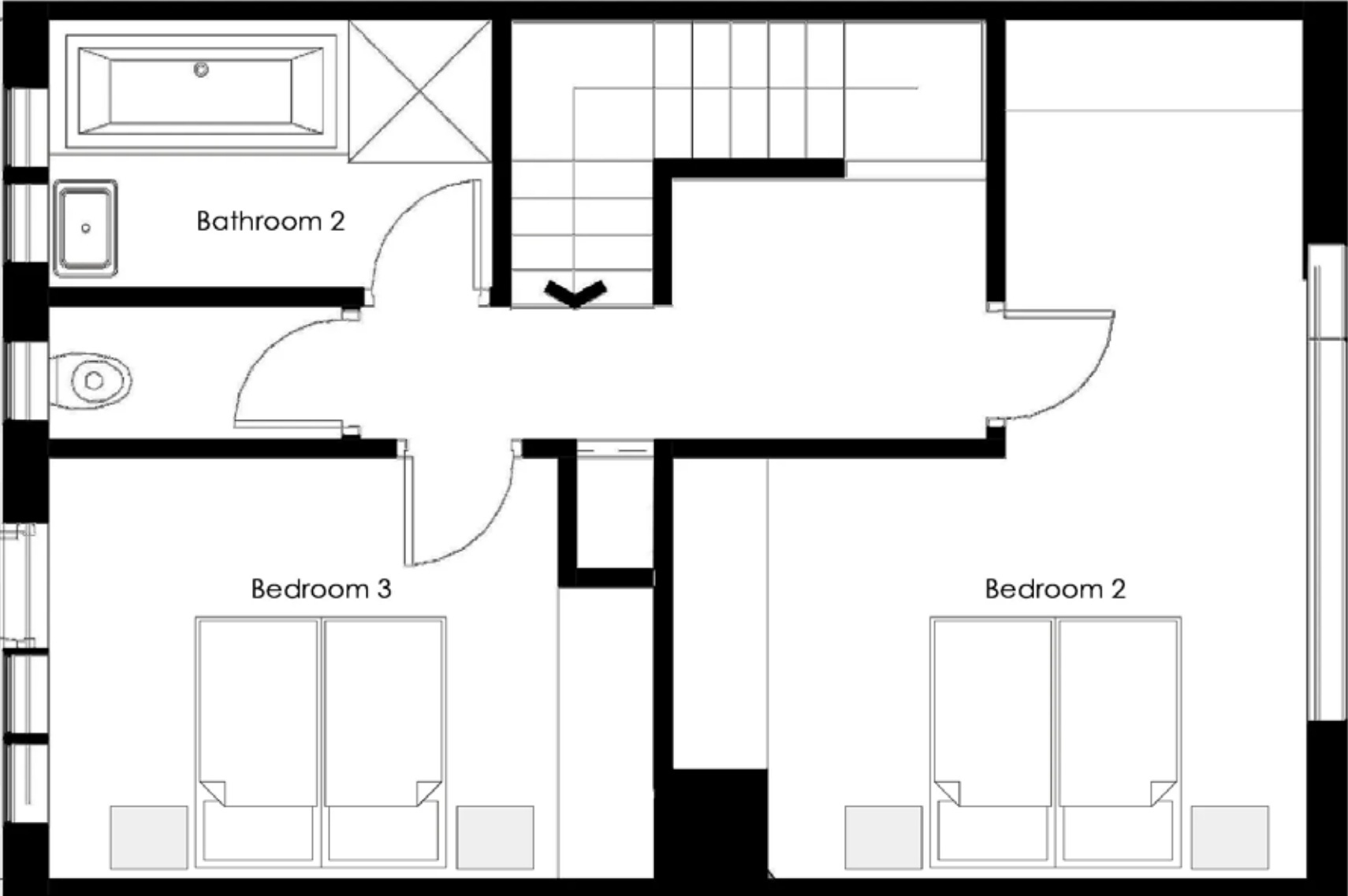


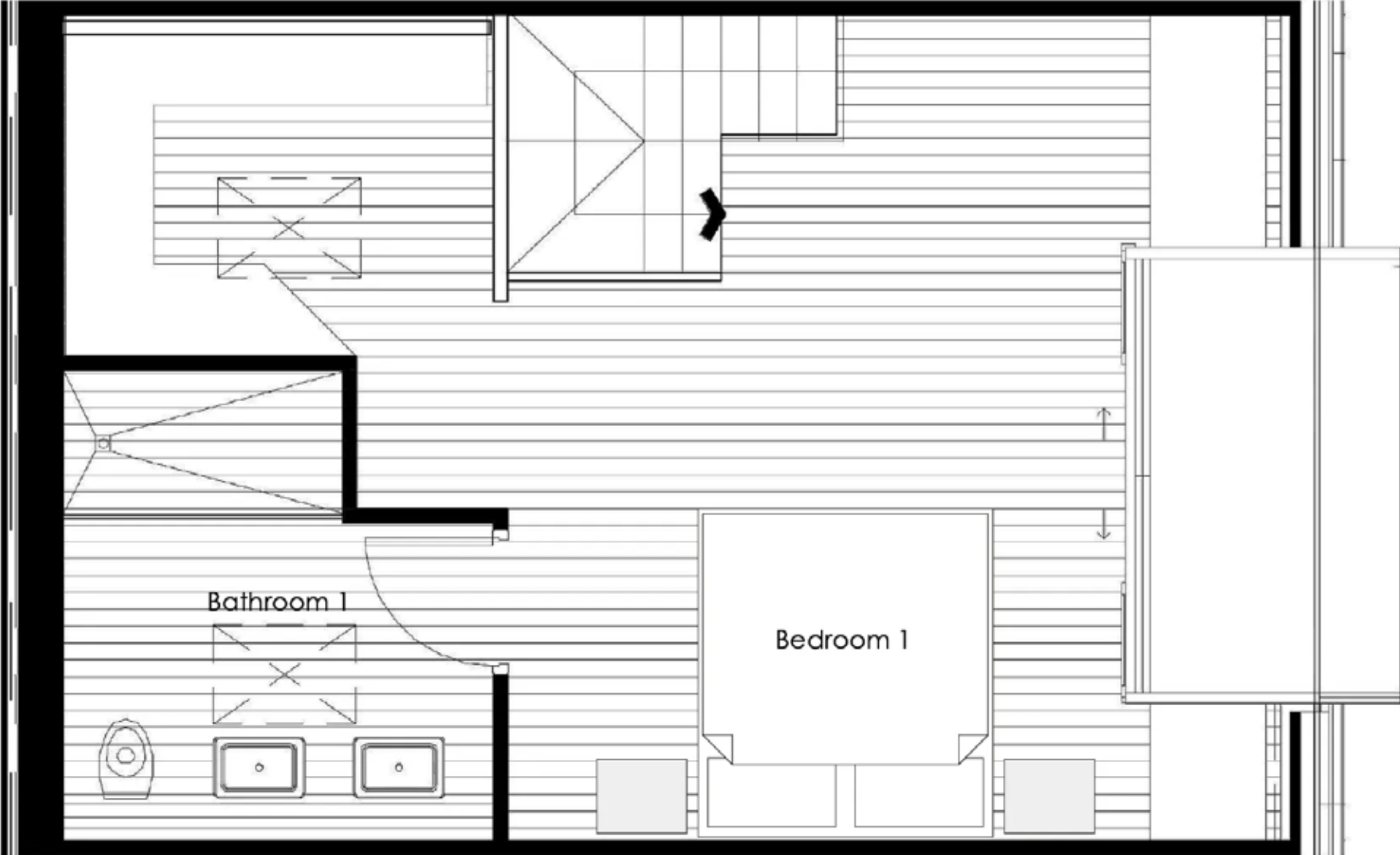


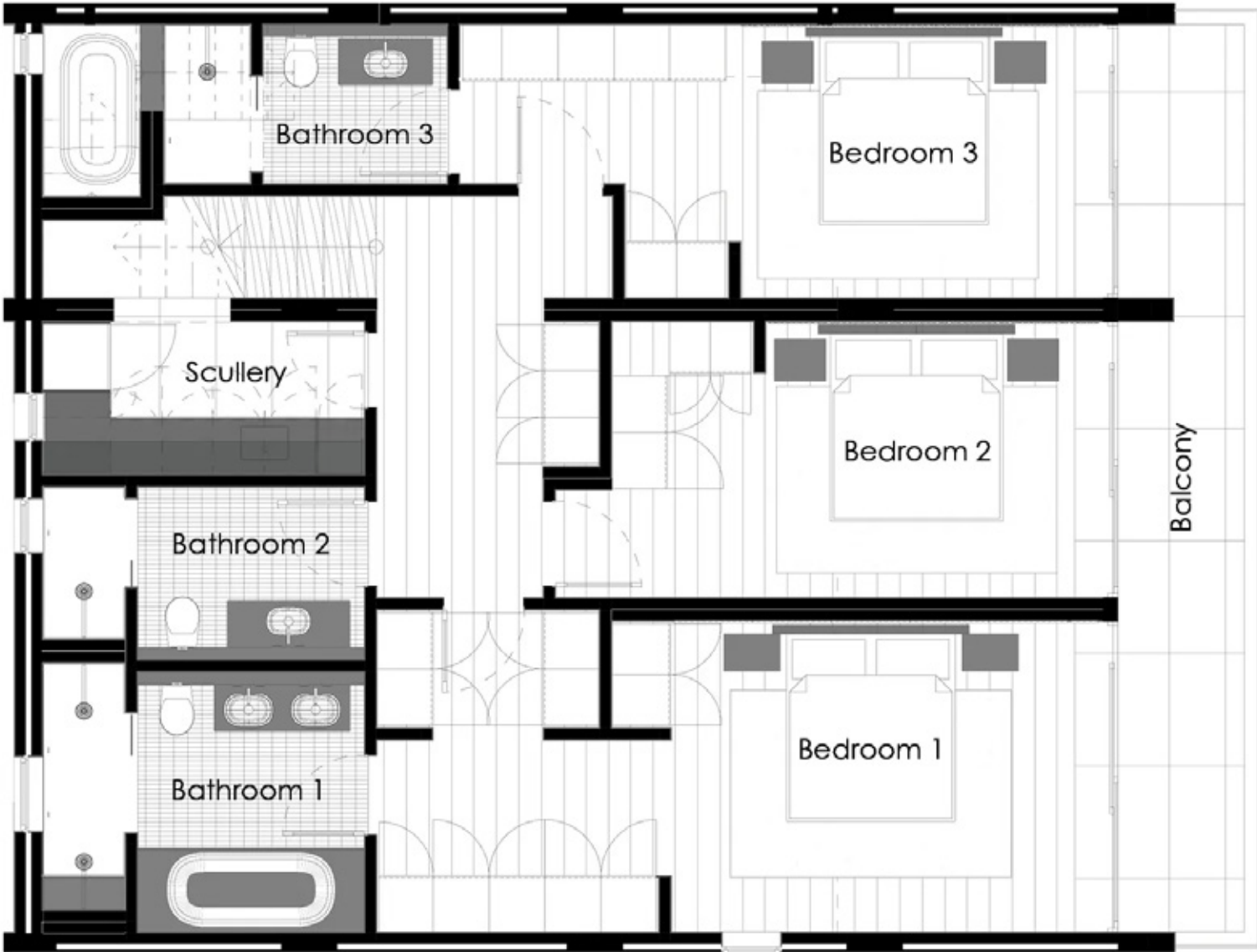
UNIT 8 - GROUND FLOOR



UNIT 8 - FIRST FLOOR

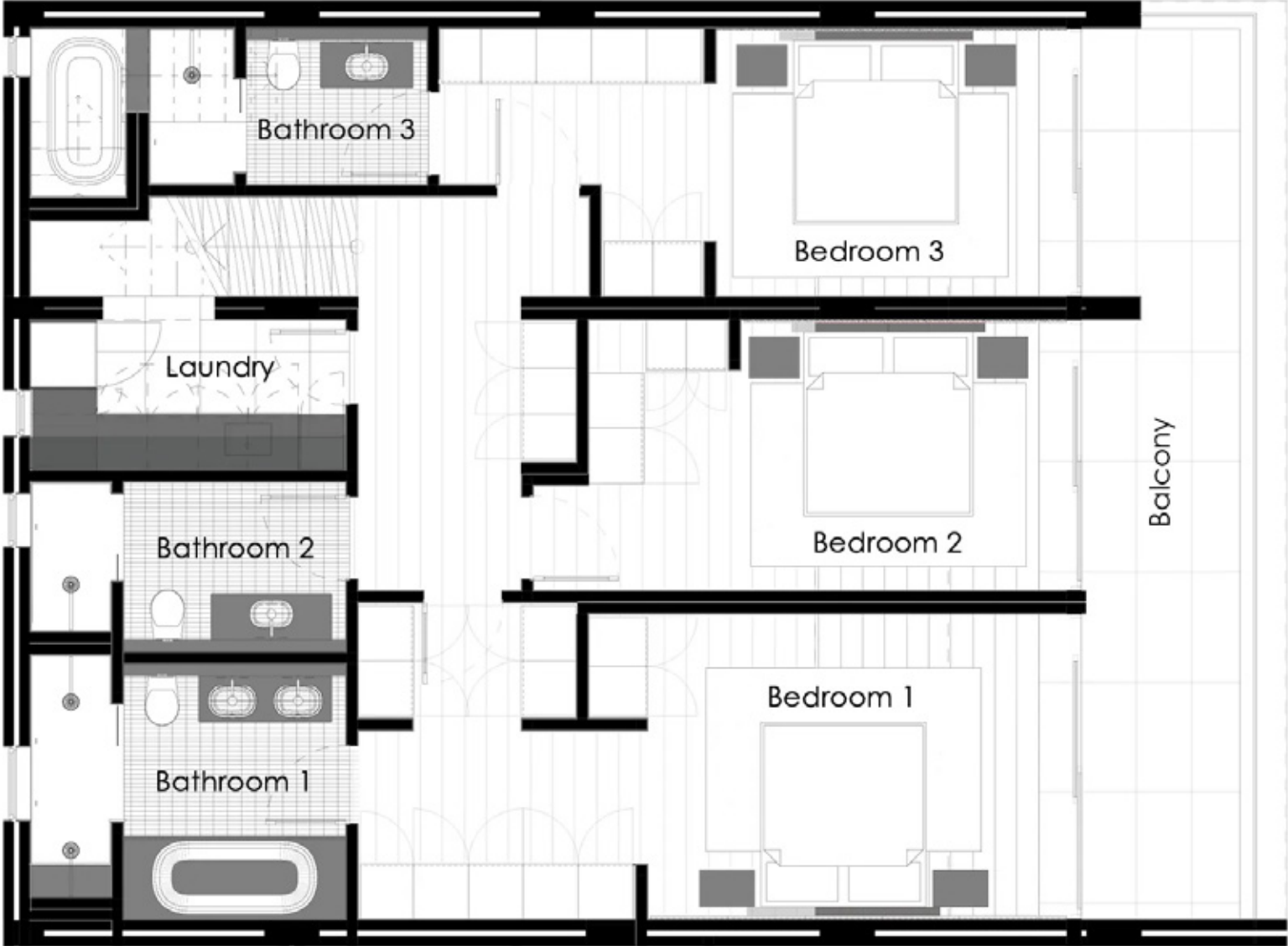




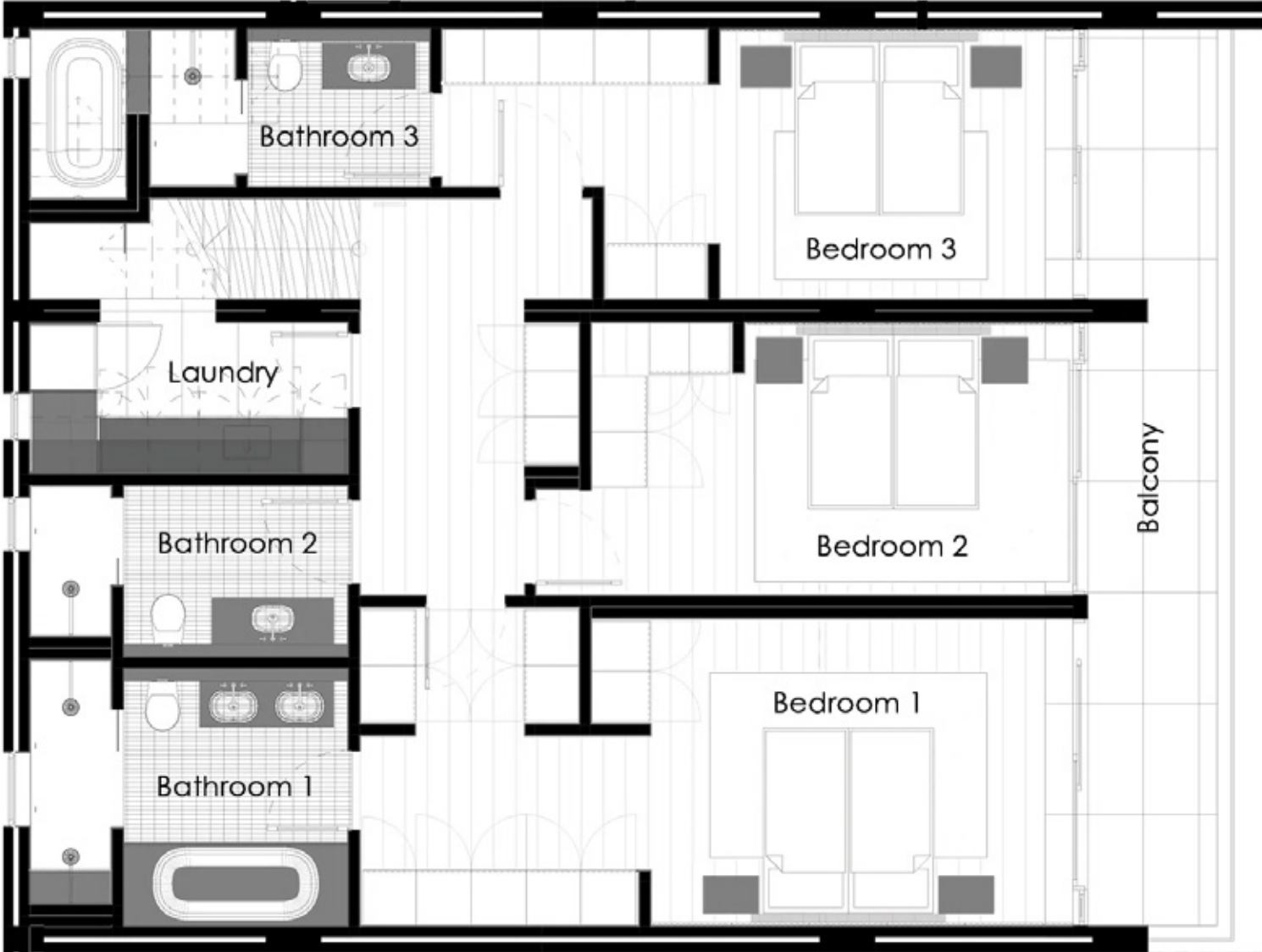




UNIT 10 - LOWER FLOOR









UNIT 12 - LOWER FLOOR

