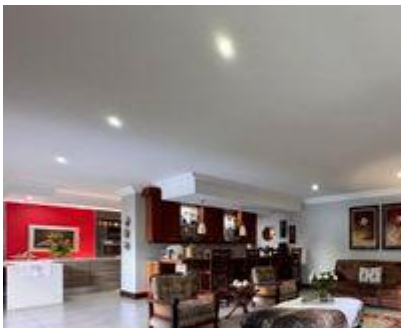
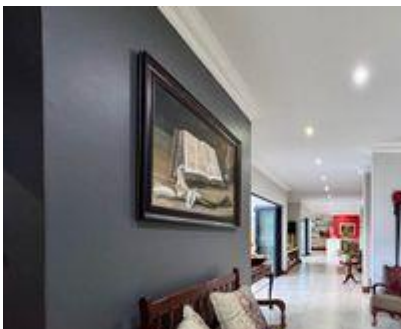


SILVERWOODS COUNTRY ESTATE / R6,990,000



**i** PROPERTY DETAILS

Family Home with Great Entertainment Spaces

Situated in the heart of Silver Woods Country Estate, this immaculate home offers modern design and functionality, set in a landscaped garden with mature trees and abundant birdlife. The home's modern facade and clean architectural lines set the tone for the contemporary design within. Inside, spacious, open-plan living areas are

**✓** FEATURES

<b>Bedrooms</b>	4	<b>Security</b>	Yes
<b>Bathrooms</b>	3	<b>Flatlet</b>	0
<b>Reception Rooms</b>	3	<b>Domestic Accom</b>	0
<b>Study</b>	1	<b>Pool</b>	Yes
<b>Garages</b>	4	<b>Furnished</b>	No
<b>Carports / Parkings</b>	4	<b>Pets Allowed</b>	Yes
<b>Monthly Levy:</b>	R1,850pm	<b>Land Size</b>	916m <sup>2</sup>
<b>Monthly Rates:</b>	R3,253pm	<b>Floor Size</b>	572m <sup>2</sup>

**☎** CONTACT

**Berdina Schurink**  
 berdina@appleproperty.co.za  
 072 440 1788

**WEB REF #:**  
**AP22926**

**+ - x =** FINANCE

<b>Bond Repayment Calculator</b>	
Monthly Repayment	R72,149.96
<b>Transfer Costs Calculator</b>	
Transfer Costs	R681,034.5
<b>Bond Costs Calculator</b>	
Bond Costs	R86,409.5

