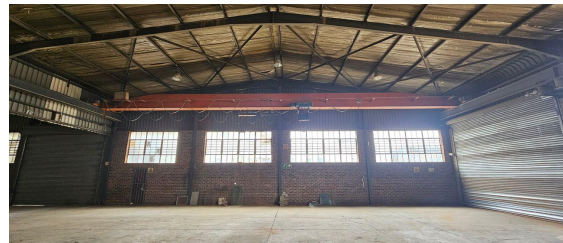
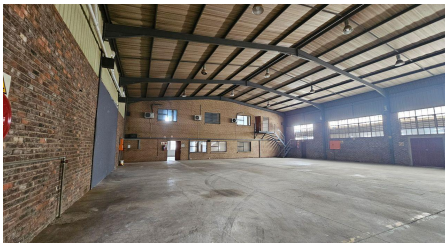
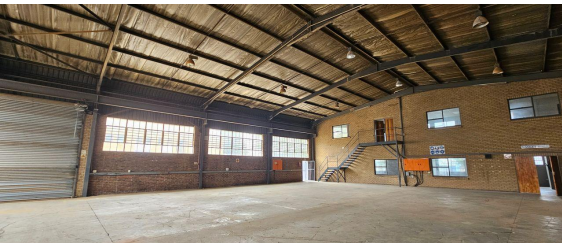
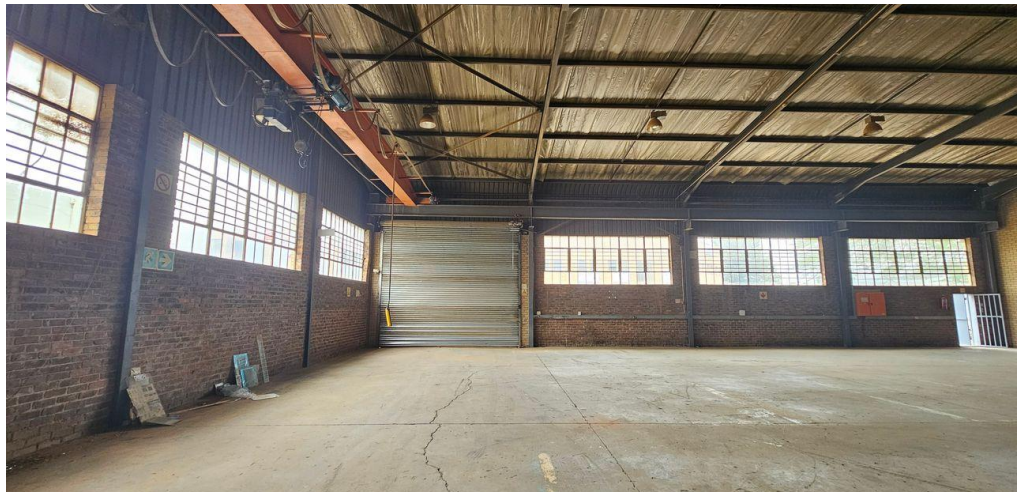
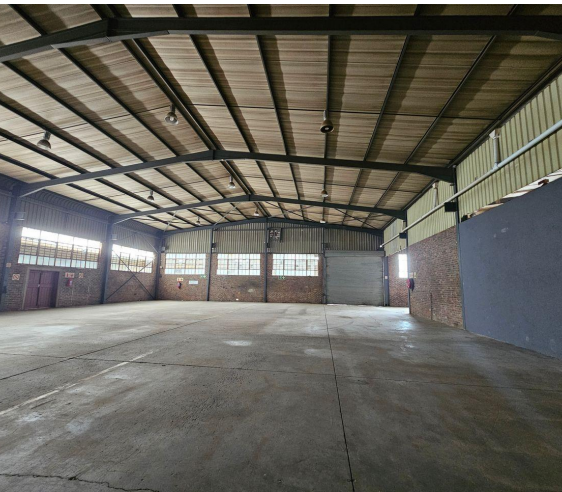




Germiston, Gauteng

Modern Manufacturing Facility To Let in Meadowdale



This 1,880m² manufacturing facility in Meadowdale, Germiston features two warehouse bays, one equipped with a 2-ton overhead crane, and is powered by 285 amps of three-phase electricity. The warehouse offers excellent height, strong natural lighting, and a large roller shutter door for smooth truck access and loading. A double-storey office component, complemented by changerooms and staff ablutions, creates a practical and efficient workspace. Located in a non-loadshedding area with easy access to the N12 and R24 highways, the property is ideal for dependable industrial operations.

Disclaimer:
All prices and property details listed on Property24 by 3Cube Property Solutions (Pty) Ltd. are subject to change without notice. While we strive for accuracy, we cannot guarantee that all information - including pricing, availability, and specifications - is fully up-to-date or error-free due to market changes and other factors. 3Cube Property Solutions and its agents accept no liability for discrepancies between advertised and actual details. Please confirm all information directly with our office before making any decisions. All prices exclude VAT unless stated otherwise.

R122,200 PM
excl. VAT & Utilities
price per m²: R65

FEATURES

Gross Monthly Rental Available From Lease Period	R122,200 Excl. VAT Negotiable Negotiable
Building Size (m ²)	1,880
Land Size (m ²)	2,225
Zoning	Industrial
Security	No
Power 3 Phase	Yes
Power Amps	285
Air Conditioning	Yes

WEB REFERENCE NO.
COM29781

Go to 3cubeproperty.co.za
for more information about this property



CONTACT
MARIO GUALTIERI

☎ 076 524 5870 / 010 300 6441
✉ mario@3cubeproperty.co.za