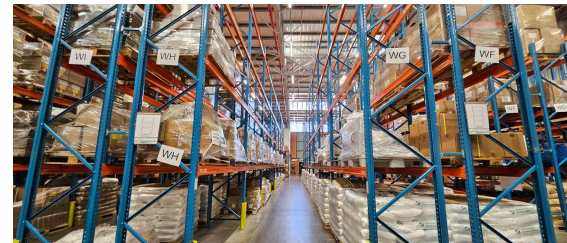
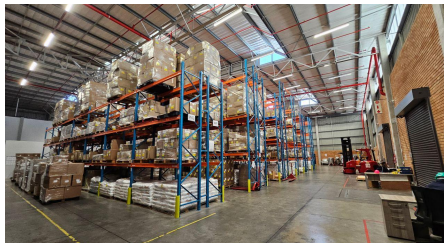
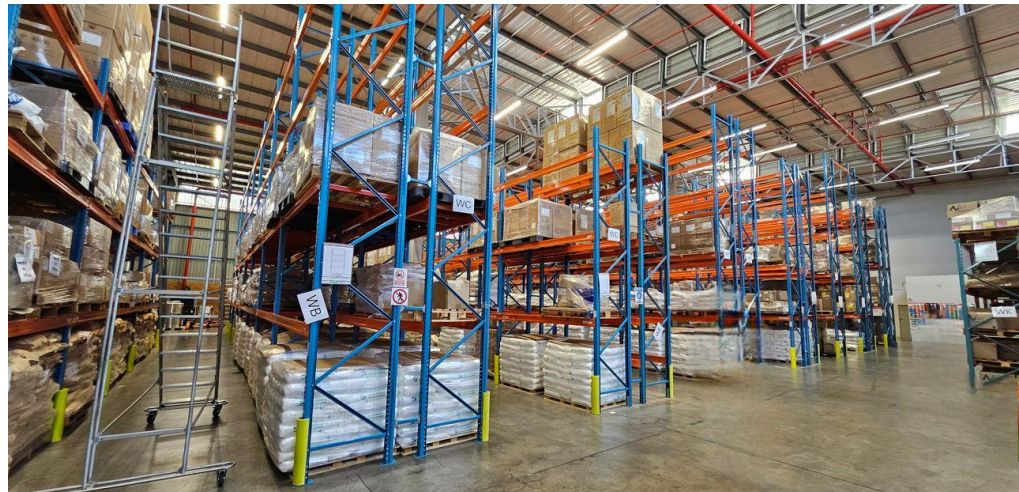
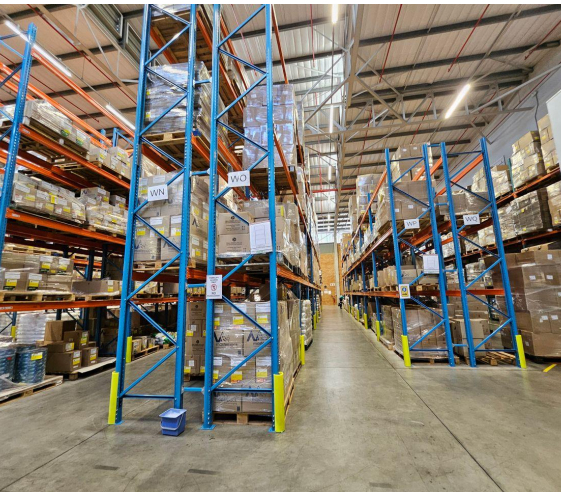


Midrand, Gauteng

Well-Located Industrial Unit Available in Randjespark, Midrand



This industrial facility in Randjespark, Midrand, offers a practical and well-connected warehousing solution with direct access to the upgraded Ben Schoeman Highway and convenient proximity to the Midrand Gautrain Station. Positioned within a park tailored for warehousing and light industrial operations, the property benefits from efficient entry and exit points via both the New Road and Olifantsfontein off-ramps. Its location along busy 16th Road further enhances visibility and supports smooth logistical movement. The double-unit configuration provides flexibility, with the option to occupy the full 3,214m² or split the space between two units. Each unit offers a balance of office and storage areas, generous internal height, and multiple high roller shutter doors, including on-grade ramps and a loading dock for streamlined access. The property is equipped with three-phase power, making it suitable for a wide range of industrial and storage requirements.

R309,444 PM
excl. VAT & Utilities
price per m²: R75

FEATURES

Gross Monthly Rental Available From	R309,444 Excl. VAT
Lease Period	Negotiable
Building Size (m ²)	3,215
Zoning	Industrial
Security	No
Power 3 Phase	No
Air Conditioning	No

WEB REFERENCE NO. COM28801

Go to 3cubeproperty.co.za
for more information about this property



DISCLAIMER:
All prices and property details listed on Property24 by 3Cube Property Solutions (Pty) Ltd. are subject to change without notice. While we strive for accuracy, we cannot guarantee that all information - including pricing, availability, and specifications - is fully up-to-date or error-free due to market changes and other factors. 3Cube Property Solutions and its agents

CONTACT
KEEGAN GOVENDER

071 889 2530 / 010 300 6441
keegan@3cubeproperty.co.za