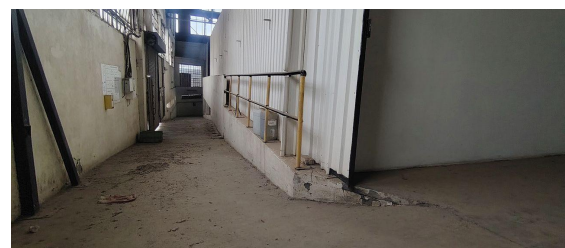




Johannesburg, Gauteng

Versatile Factory/Industrial Unit to Rent in Heriotdale



Located in the sought-after industrial area of Heriotdale, this well-positioned factory offers a practical and versatile space suitable for a variety of business operations. The property features two equally sized floor areas that provide ample flexibility for manufacturing, warehousing, logistics, or mixed-use requirements. Its layout is designed with efficiency in mind, incorporating dedicated zones for administration, storage, and production to support smooth day-to-day operations. With generous vertical clearance, the factory can comfortably accommodate machinery, racking, or high-volume stock. The unit is equipped with loading docks for streamlined receiving, dispatch, and distribution, making it an ideal fit for transport, warehousing, and production-driven businesses. An additional basement storage area further enhances the facility's capacity, offering room for excess inventory, equipment, or specialised operational needs. With its adaptable design and strategic location, this Heriotdale property presents a strong opportunity for companies seeking functional industrial space that supports both current and future growth.

R96,590 PM
excl. VAT & Utilities
price per m²: R26

WEB REFERENCE NO.
COM28318

Go to 3cubeproperty.co.za
for more information about this property



FEATURES

Gross Monthly Rental Available From Lease Period	R96,590 Excl. VAT Negotiable Negotiable
Building Size (m ²)	3,715
Zoning	Industrial
Security	No
Power 3 Phase	No
Air Conditioning	No

CONTACT
CYLE OBERMEYER

📞 082 749 7530 / 010 300 6441
✉ cyle@3cubeproperty.co.za

DISCLAIMER:
All prices and property details listed on Property24 by 3Cube Property Solutions (Pty) Ltd. are subject to change without notice. While we strive for accuracy