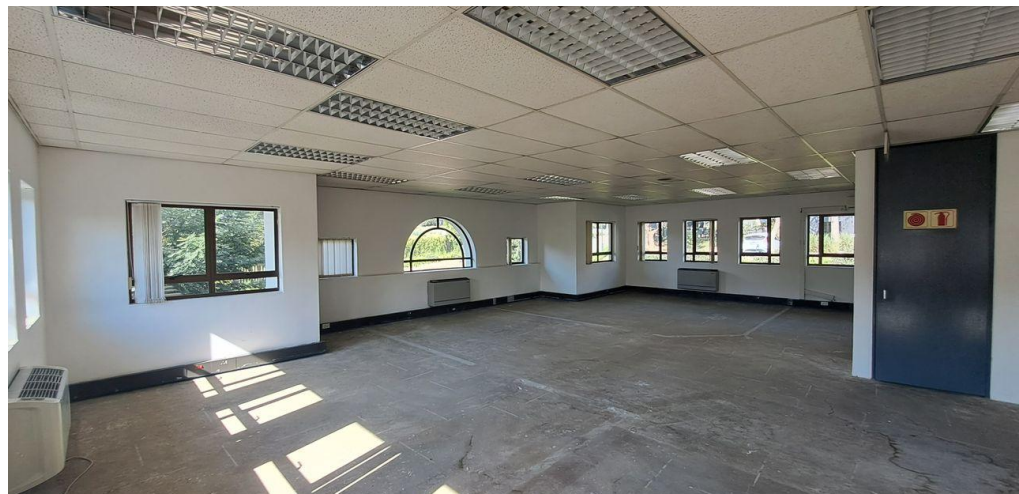
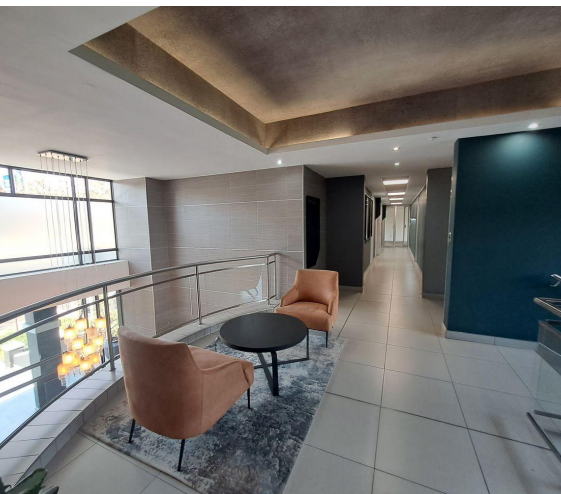




Sandton, Gauteng

Bright 448m² First-Floor Office to Let



This bright and spacious 448m² first-floor office in Hyde Park offers an open-plan, white-boxed layout, providing the perfect blank canvas for businesses to create their ideal workspace. Filled with abundant natural light, the space promotes a fresh and energising environment that enhances productivity and comfort. The flexible open-plan design encourages collaboration and can be tailored to suit a wide range of business types. Located in the prestigious Hyde Park area, the office is within close proximity to key commercial and retail hubs, including Rosebank and Illovo, offering convenient access to restaurants, shops, and essential services. With excellent connectivity to major public transport routes, the property is easily accessible for both employees and clients. This prime location, combined with the modern, adaptable interior, presents a rare opportunity for businesses seeking a professional and prestigious presence in one of Johannesburg's most sought-after business districts.

R53,410 PM
excl. VAT & Utilities
price per m²: R119.21

FEATURES

Gross Monthly Rental Available From Lease Period	R53,410 Excl. VAT Immediately Negotiable
Building Size (m ²)	448
Zoning Security	Commercial Yes
Power 3 Phase	Yes
Air Conditioning	Yes

WEB REFERENCE NO. COM27181

Go to 3cubeproperty.co.za for more information about this property



CONTACT
ILAN SEGAL

☎ 078 566 9964 / 010 300 6441

✉ ilan@3cubeproperty.co.za