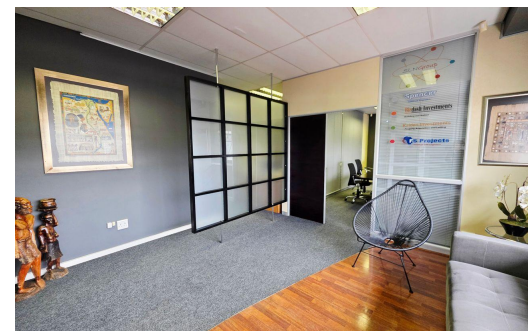
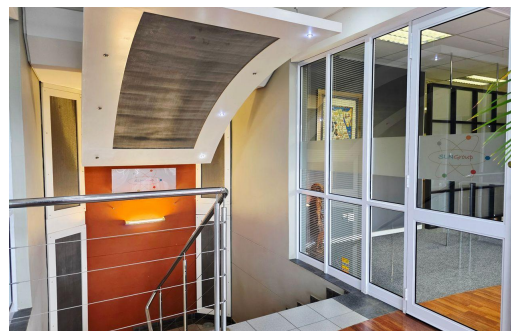




4

8



R193 per m²

258m² Office To Let in Umhlanga Central

FLOOR SIZE	258m ²	OPEN PARKINGS	4
ZONING	Commercial	BASEMENT PARKINGS	8
SECURITY	Yes		
AIR CONDITIONING	Yes		



Fiona Khan
0732695374
fionak@spire.co.za